

HyBase V6

Operating table

Versatility beyond Expectation



With increasingly complex surgical procedures, today's surgical environment requires a table that instantly adapts to all the versatility to provide the highest level of care.

- An extreme load capacity of up to 460 kg (1014 lbs).
- The longitudinal shift up to 350mm (23.6") for free to access to C-arm.
- Triple-layer decompression pad to redistribute the patient's weight.
- 12 electric movements, such as table top up/down, slope and tilt, adapting to various surgical needs.
- Bluetooth hand control for unobstructed control in operating rooms. Independent manual override system for dual safety.
- 600mm lowest table position for neurosurgery, while 1,050 mm (41.3") highest table position for orthopedics.

Flexibility for multiple disciplines

Meeting the needs of different surgical positions

Modular Design

The modular design of the tabletop is tailored for various surgical discipline needs, which can also lower the cost for hospitals as they only need to buy the specific module, instead of a new table, for an additional surgical type.



Surgical Disciplines



Flexibility for multiple disciplines

Cater to increasing endoscopic surgeries

Higher Imaging Quality

With the development of minimally invasive surgery (MIS), requirement for better images during procedures arises. HyBase V6 allows clear and high-quality images that are crucial for today's MIS, cardiothoracic, orthopedic, and neurosurgical procedures.

Huge Imaging Access



(Optional) Carbon fiber operating plate provides extreme imaging space.

The carbon fiber tabletop ensures good radiolucent imaging. With a wide imaging access and better radiolucency,

Bidirectional longitudinal shift



Head-end shift: 160 mm (6.3")
Foot-end shift: 190 mm (7.5")

Built-in body elevator



Build-in body elevator for kidney surgery.

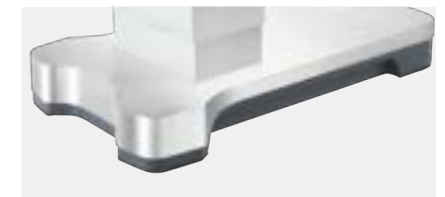
Carbon fiber tabletop



Radiolucent carbon fiber tabletop provides better imaging.

Optimal Stability

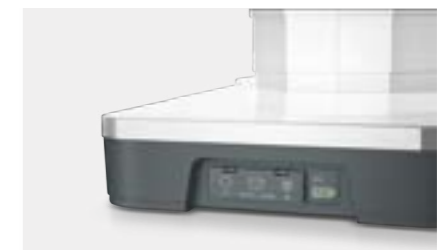
With a load capacity of up to 460 kg (1014.1 lbs), the table is designed to accommodate the highest safety and stability. All positions are permitted up to overall load of 250 kg (551.1 lbs).



Electric brake provides higher stability.

Better Exposure to Operating Field

For urologic surgery, the operating table needs to have better exposure space and focus on water resistance.



IPX5 protection against water jets from any direction.

Safety for various positions

Enhance patient safety

Manual Override System

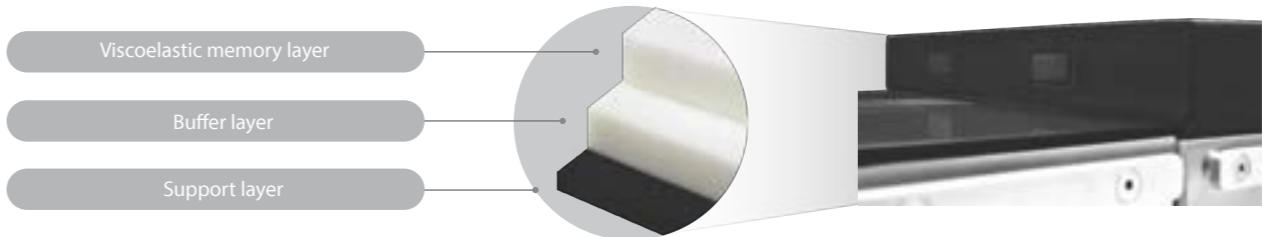
Manual Override System allows table articulation movements and release the brake in the event of primary control or power/battery malfunction, through an independent hydraulic circuit. Manual operations of all basic electro-hydraulic functions can be actuated by using a foot pump combined with the knob next to it.



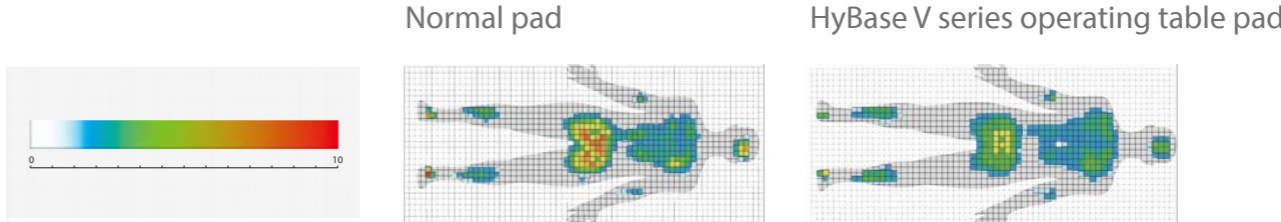
Multi-layer Decompression Pad

Mindray introduces a new slow rebound decompression mattress. The multi-layer structure allows comfort to patient weight, excellent pressure distribution and safety against the lying on the tabletop plate.

- Ultra-sonically welded seams and waterproof
- Superior internal air circulation design

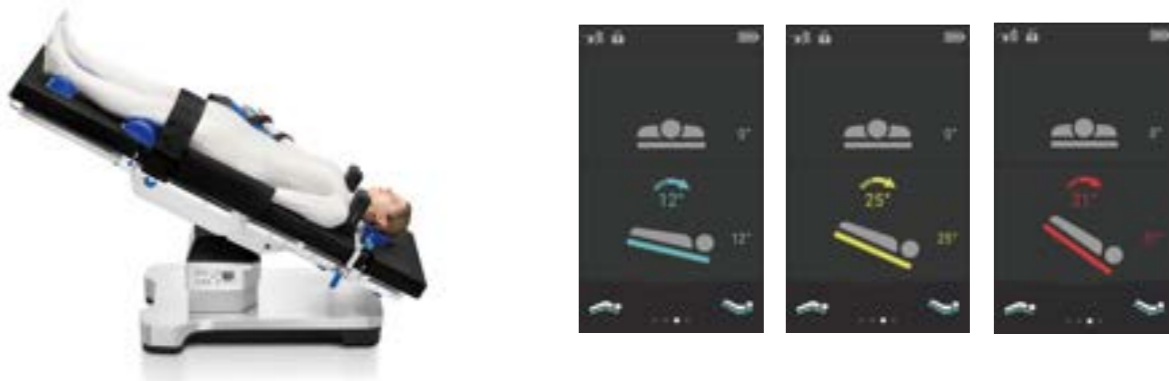


Compared with current mainstream products, our mattress has optimizing decompression effect, which can better disperse the pressure and reduce the risk of pressure ulcer.



Color-coded Indication Technology

During the tilt or slope adjustment, a color-coded indicator appears on the screen to show the angle and issue a timely warning when it comes to excessive Trendelenburg and reverse Trendelenburg positions.



Step 1: Rotate the function icon to the position indicated by the arrow.



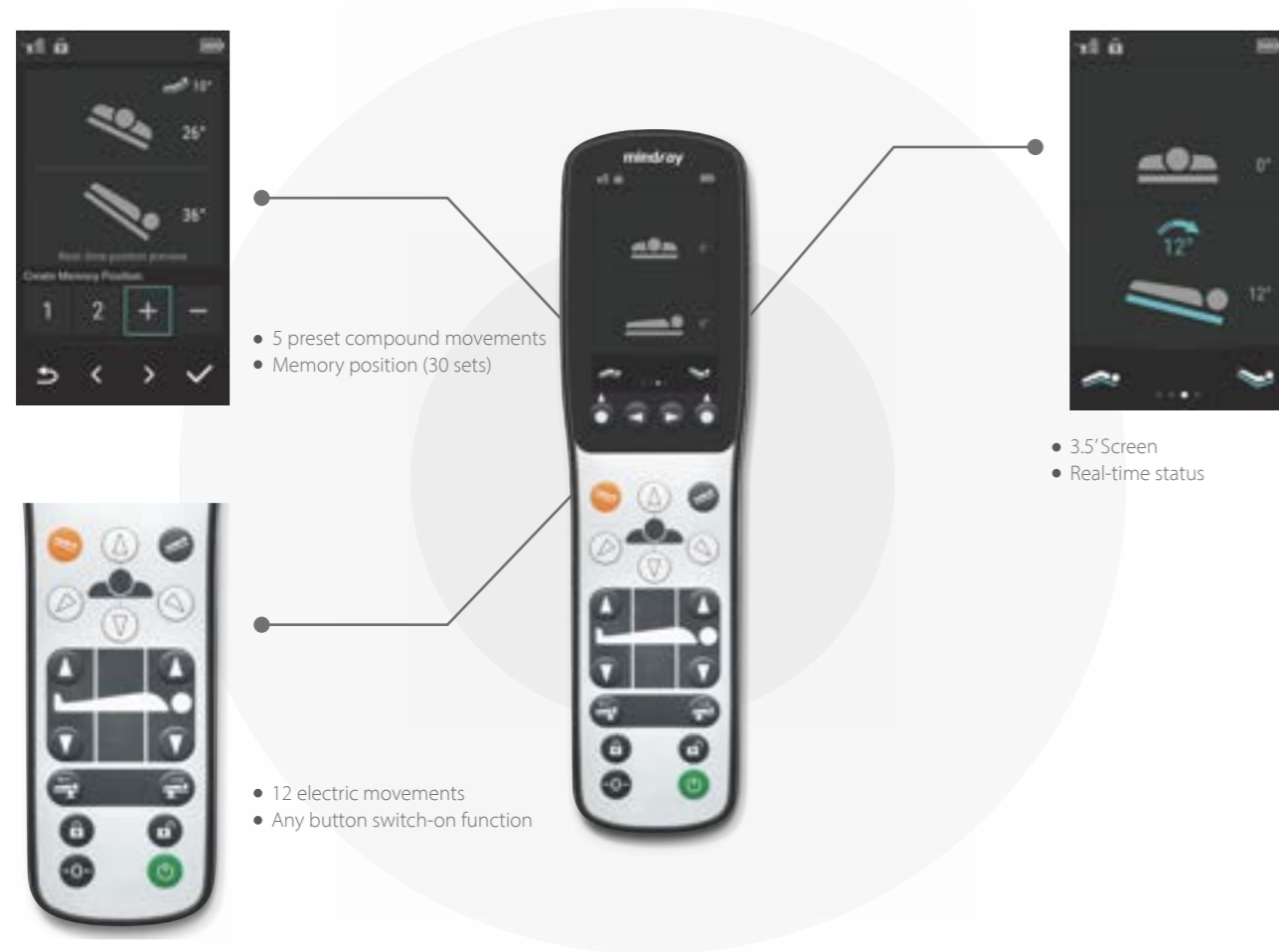
Step 2: Adjust the operating table by stepping on the foot pump.



Efficiency in every step

Improve efficiency in the operating room

Intuitive icons with reasonable layouts



Corded/wireless hand control



Override panel (Backup control panel)

Easy to Adjust



One hand adjustable head plate.



Gas-spring assisted leg plates with foldable design.

Easy to Use



Button design to remove the leg plates.



Four double-swivel castors make it easier to move the table toward any directions.

Easy to Clean



Bellows-free design.



Flat stainless-steel base cover.